



POWERMAST FREESTANDING SYSTEM

The PowerMast tri-mast and quad-mast freestanding systems provide easy access, fast setup, and unmatched portability for jobs up to 80 feet (24.38 m).

SMART DESIGN

- Single or twin configurations
- Removable, portable components
- Powered by electric drill

TRI-MAST FEATURES

- Can be used with a single 6.5 ft (2 m) platform
- Tied or untied configurations
- Working heights up to 52 ft (15.85 m) indoors, 33 ft (10.01 m) outdoors

QUAD-MAST FEATURES

- Easy to move while assembled
- Working height up to 80 ft (24.38 m)
- Suitable for long platforms
- Fits through tight spaces
- No rigging needed
- Low PSI footprint
- Easy to store



>> DID YOU KNOW?

ReechCraft's PowerMast is also available in a wall-tied option! Visit powermast.reechcraft.com for more details and information!

» TRI-MAST SPECIFICATIONS

GENERAL SPECIFICATIONS

Maximum Platform Width	Up to 30 in. (762 mm)
Maximum Platform Length (Twin)	Any within 1500 lb (680 kg) System Capacity
Maximum Platform Width (Single)	6.5 ft (2 m)
Maximum Platform Height	46.2 ft (14.1 m) (Indoor) 26.8 ft (8.2 m) (Outdoor)
Maximum Working Height	52.2 ft (15.85 m) (Indoor)* 32.8 ft (10.06 m) (Outdoor)*
Maximum Load Capacity (Twin)	1500 lb (680 kg) (750 lb (340 kg) per Mast)
Maximum Tie Spacing	10 ft (3.05 m)
Maximum Climbing Speed	25 ft/min (7.6 m/min)
Drive System	120:1 Clutch Protected Transmission
Operating System	1/2-inch 8 Amp Minimum Drill Motor
Required Voltage	110 VAC Single Phase
Safety Devices	Lock Lever, Overload Clutch, Overspeed Brake
Climbing Unit Weight	65 lbs (29 kg)
32 in. (813 mm) Mast Weight	19 lbs (9 kg)
5 ft (1.52 m) Mast Weight	32 lbs (16 kg)
Tie Weight	12 lbs (5 kg)
Mast Section	5 in. (127 mm) x 6 in. (152 mm) Aluminum with Galvanized Steel Track
Mast Connection Type	Interference Locking Cam
Base Dimension	106 in. (2692 mm) x 80 in. (2032 mm)

*Based on platform height plus 6 ft (1.8 m). **Note:** Specifications subject to change without notice.

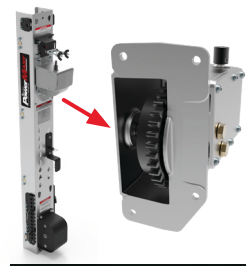
» QUAD-MAST SYSTEM

The freestanding PowerMast quad-mast offers ultimate versatility with a working height of up to 80 feet (24.38 m)! Like every product in the PowerMast lineup, this workhorse is assembled using our modular, easy-to-use components and powered by a standard drill. The quad-mast can be used in single and twin configurations.



ACCESSORIES + FEATURES

CLIMBING UNIT



The climbing unit features a lock lever, an overspeed brake to automatically stop the platform in the event of overspeed, and a gearbox with an overload clutch. It is drill operated to eliminate typical electrical components.

QUICK CONNECTION



Our tools-free mast connection saves time, allows for fast height adjustments, and has a built-in over-top stop safety feature.

VERSATILE BASE



The base uses the same tools-free quick connection as the masts and offers four connection locations for a single mast or tri-mast setup.

CASTER WHEELS



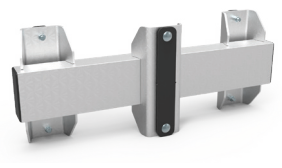
The base features four swiveling and lockable casters that allow the PowerMast to easily rotate 360 degrees to make any job accessible.

STURDY OUTRIGGERS



The outriggers are equipped with fully adjustable pads to provide a safe, stable base, even in areas with uneven or rough terrain.

TRI-MAST TIE



Quickly and easily tie masts together to stabilize the PowerMast.

