



POWERPOLE: CLIMB FASTER

Remove the manual labor of pumping or cranking and replace it with easy, powered access! The PowerPole outperforms manual scaffolding and pump jacks with its patented PowerTrak™ system, accessing heights up to 75 feet (22.86 m).

FAST + EFFICIENT

- Quick setup with no roof rigging
- Perfect for tight spaces
- Accommodates platforms up to 28 in. (711 mm) wide
- Landscape-friendly setup
- Three times faster than traditional pole systems

IDEAL APPLICATIONS:

- Siding, painting, and wall coating
- Window installation, caulking, and glazing
- Tuckpointing, patching, and repair
- Waterproofing and cleaning



ACCESS EQUIPMENT COMPARISON (WORKING HEIGHTS UP TO 75 FT (22.86 M))

Access Equipment	PowerPole	Swing Stage	Boom/Scissor	Mast Climber	Scaffolding
Setup Cost	Best	Good	Better	Fair	Fair
Portability	Best	Good	Fair	Fair	Fair
Tight Spots	Best	Good	Fair	Fair	Fair
Work at Ideal Height	Best	Better	Better	Better	Poor
Landscape-friendly Design	Best	Good	Fair	Fair	Fair

» POWERPOLE SPECIFICATIONS

GENERAL SPECIFICATIONS

Maximum Rated Load on Climbing Unit	650 lbs (295 kg) (1300 lbs (590 kg) per pair)
Safety Devices	Lock Lever, Manual Crank, Integrated Overspeed Brake
Maximum Climbing Speed	25 ft/min (7.6 m/min)
Maximum Platform Height	69 ft (21.03 m)
Maximum Working Height	75 ft (22.86 m)*
Platform Sizes	Up to 40 ft (12.19 m) x 28 in. (711 mm)
Single Person Platform Size	26 in. (660 mm) x 36 in. (914 mm) x 42 in. (1067 mm)

POWERPOLE TILT-UP SPECIFICATIONS

Maximum Midspan Tie Spacing	16 ft (4.88 m)
Maximum Untied Working Height (Requires Outriggers)	24 ft (7.32 m)*
Maximum Height without Midspan Tie (with Outriggers)	40 ft (12.19 m)

*Based on platform height plus 6 ft (1.8 m). **Note:** Specifications subject to change without notice.

» SYSTEM FEATURES

CLIMBING UNIT + GEARBOX

Powered by a 1/2-inch drill, the PowerTrak™ system has a 650-pound (295 kg) load rating and is three times the speed of a pump jack system. Our durable gearbox eliminates typical electrical components, ensures portability, and features an overspeed brake for added safety.



QUICK ATTACH POLES + COUPLERS

The PowerPole's streamlined, extruded aluminum poles are easy to haul and install. The tools-free coupler allows for quick assembly. The pole's contoured profile assists with grip, both during assembly and when tilting the system into place.



SYSTEM ACCESSORIES

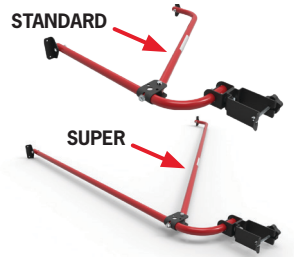
EXTENDABLE V-BRACE

The extendable v-brace, used with the outrigger base, stabilizes the top of the poles and adjusts for wall distances of 36-51 inches (914-1295 mm).



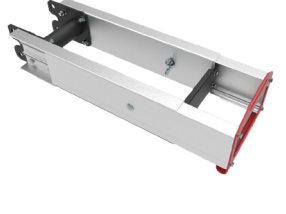
STANDOFF TIES

The standoff tie is a durable solution that secures the PowerPole to buildings and accommodates most pitched rooflines. The super standoff tie features extra-long tubes, allowing roof access and providing roofline fall protection.



PLATFORM SUPPORT

The quick-attach platform support is used for dual mast configurations and is installed with the PowerLatch™ connector. With 16 inches (279 mm) of adjustment, this component easily supports the platform and work bench.



OUTRIGGER ASSEMBLY

The rugged steel stabilizers keep you pressed into the wall, allowing a 24-foot (7.32 m) work height without tying into the structure. Each side of the outrigger has a stabilizer that adjusts 8 inches (203 mm) to level the system.



SINGLE PLATFORM

The single-person platform features dual entry and a large 36-inch (914 mm) wide by 26-inch (660 mm) deep work area, providing ample space for you and your tools. The platform quickly attaches to the climbing unit via the PowerLatch.

