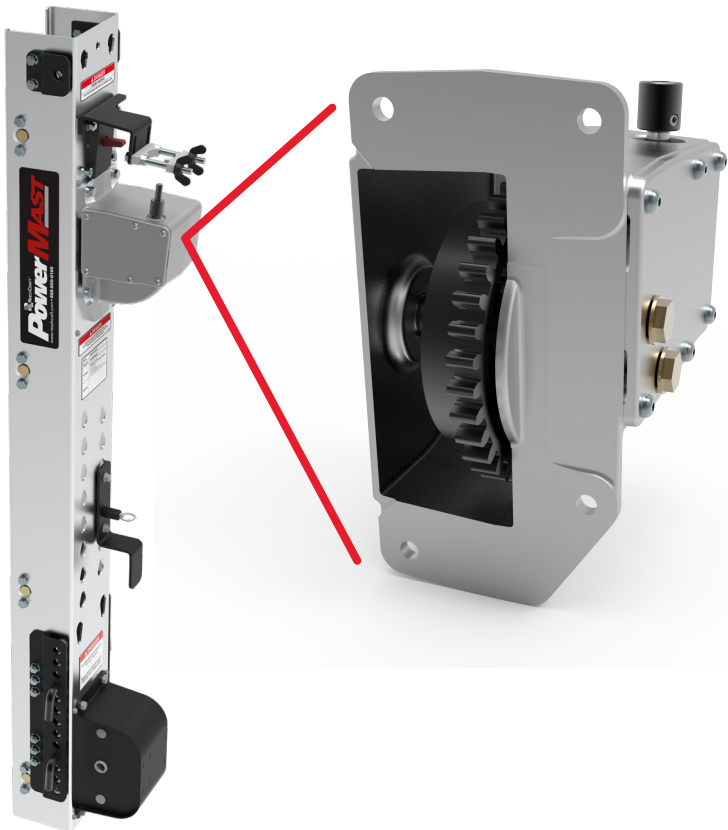


POWERMAST GEARBOX SERVICE MANUAL



It is important that you read, understand, and obey the contents of this manual. The purpose of this manual is to provide safe and proper inspection and service procedures for qualified individuals only. Because we at ReechCraft, Inc. are always working to improve our products, processes, and procedures, we reserve the right to make changes without prior notice. Please contact ReechCraft for updated information.

SAFETY ALERT SYMBOLS + SAFETY SIGNAL WORDS



THIS IS THE SAFETY ALERT SYMBOL. It is used throughout this manual and on the machine to alert you to potential personal injury hazards. Understand and obey all safety messages.



INDICATES AN IMMINENTLY HAZARDOUS SITUATION THAT, IF NOT AVOIDED, WILL RESULT IN SERIOUS INJURY OR DEATH. THIS LABEL WILL HAVE A RED BACKGROUND.



INDICATES A POTENTIALLY HAZARDOUS SITUATION THAT, IF NOT AVOIDED, COULD RESULT IN SERIOUS INJURY OR DEATH. THIS LABEL WILL HAVE AN ORANGE BACKGROUND.



INDICATES A POTENTIALLY HAZARDOUS SITUATION THAT, IF NOT AVOIDED, MAY RESULT IN MINOR OR MODERATE INJURY. IT MAY ALSO ALERT AGAINST UNSAFE PRACTICES. THIS LABEL WILL HAVE A YELLOW BACKGROUND.



INDICATES A RECOMMENDED ACTION PERTAINING TO THE OWNERSHIP OF THE MACHINE, BUT NOT DIRECTLY RELATING TO THE SAFETY OF OPERATORS. THIS LABEL WILL HAVE A WHITE BACKGROUND.



THIS PRODUCT MUST COMPLY WITH ALL SAFETY-RELATED BULLETINS. CONTACT REECHCRAFT, INC. OR THE LOCAL AUTHORIZED REECHCRAFT REPRESENTATIVE FOR INFORMATION REGARDING SAFETY-RELATED BULLETINS THAT MAY HAVE BEEN ISSUED FOR THIS PRODUCT.



REEHCRAFT, INC. SENDS SAFETY-RELATED BULLETINS TO THE OWNER ON RECORD OF THIS MACHINE. CONTACT REECHCRAFT TO ENSURE THAT THE CURRENT OWNER RECORDS ARE UPDATED AND ACCURATE.

REEHCRAFT MUST BE NOTIFIED IMMEDIATELY IN ALL INSTANCES WHERE OUR PRODUCTS HAVE BEEN INVOLVED IN AN ACCIDENT INVOLVING BODILY INJURY OR DEATH OF PERSONNEL, OR WHERE SUBSTANTIAL PERSONAL PROPERTY DAMAGE OR DAMAGE TO THE REECHCRAFT PRODUCT HAS OCCURRED.

Contact Us Regarding:

- Accident Reporting
- Product Safety Publications
- Current Owner Updates
- Product Safety Questions
- Standards and Regulations Compliance Information
- Questions Regarding Special Applications
- Questions Regarding Product Modifications

Contact Information:

Technical Safety and Engineering Department

845 34th St N, Fargo, ND 58102

customer.service@reechcraft.com

In USA: 1-888-600-6160 • **Outside USA:** 1-701-280-5900

REVISION LOG

Updated Version of Manual.....	June 2026
Original Version of Manual.....	September 2025

TABLE OF CONTENTS

SECTION - INFORMATIONAL

Safety Alert Symbols + Safety Signal Words.....	2
Contact Information.....	3
Revision Log.....	4

SECTION 1 - SERVICE + MAINTENANCE SAFETY PRECAUTIONS

1.0 Service + Maintenance Introduction.....	6
1.1 Maintenance Safety.....	7
1.2 Service + Maintenance Guidelines.....	8
1.3 Service + Maintenance Log.....	9

SECTION 2 - GEARBOX GENERAL INFORMATION

2.0 Verify Clutch Force.....	10
2.1 Gearbox Diagram.....	10
2.2 Gearbox Part Numbers.....	11

SECTION 3 - REMOVING GEARBOX FROM CLIMBING UNIT

3.0 Tools Needed.....	12
3.1 Removal Instructions.....	13

SECTION 4 - DRIVE + PINION GEAR

4.0 Instructions for Disassembly.....	14
4.1 Instructions for Assembly.....	15

SECTION 5 - WORM SHAFT

5.0 Instructions for Disassembly.....	16
5.1 Instructions for Assembly.....	18

SECTION 6 - CLUTCH ASSEMBLY

6.0 Instructions for Disassembly.....	19
6.1 Instructions for Assembly.....	20

SECTION 7 - WARRANTY.....	21
---------------------------	----

LIST OF TABLES

- 1.0 Service + Maintenance Log 9
- 2.0 Heavy-Duty Gearbox Part Numbers 11

LIST OF FIGURES

- 2.0 Heavy-Duty Gearbox Diagram 10
- 3.0 Removing Gearbox from Climbing Unit..... 13
- 4.0 Pinion Gear 14
- 4.1 Removing the Gear Shaft 14
- 4.2 Slide Pinion Gear Off Pinion Shaft..... 15
- 4.3 Grease InteriorTeeth 15
- 5.0 Worm Shaft..... 16
- 5.1 Location of Oil Plugs, Screws, + Cover..... 16
- 5.2 Worm Shaft Bearings, Snap Ring, + Coupler Disassembly 17
- 5.3 Good + Bad Worm Shafts 17
- 5.4 Worm Shaft Bearings, Snap Ring, + Coupler Assembly 18
- 5.5 Reassembly of Cover + Oil Plugs 18
- 6.0 Clutch Assembly 19
- 6.1 Removing Clutch Assembly..... 19
- 6.2 Good + Bad Clutch Assemblies 20

SECTION 1

SERVICE + MAINTENANCE SAFETY PRECAUTIONS

1.0 Introduction

This section contains general safety precautions which must be observed during maintenance of the machine. It is important that maintenance personnel heed these warnings to avoid possible injury to themselves or others. A maintenance program must be established by a competent person and followed to ensure the machine is in safe operating condition.

Due to our commitment to continuous improvement, ReechCraft reserves the right to make specification changes without prior notification. Contact ReechCraft for updated information.



MODIFICATION OF THE MACHINE WITHOUT THE MANUFACTURER'S APPROVAL IS A PROHIBITED PRACTICE AND A DIRECT SAFETY VIOLATION. ONLY REPLACE PARTS WITH IDENTICAL COMPONENTS OR REECHCRAFT-APPROVED EQUIVALENTS.

Your safety and the safety of others is the primary concern when performing service and maintenance on the machine. Always be conscious of moving parts and pinch points. Never leave an object in an unstable or unsupported position.



SINCE THE MANUFACTURER HAS NO DIRECT CONTROL OVER THE FIELD SERVICE AND MAINTENANCE OF THE MACHINE, SAFETY IS THE RESPONSIBILITY OF THE OWNER/OPERATOR.

1.1 Maintenance Safety



FAILURE TO COMPLY WITH THE SAFETY PRECAUTIONS LISTED IN THIS SECTION COULD RESULT IN MACHINE DAMAGE, PERSONAL INJURY, OR DEATH.

- Remove all rings, watches, and jewelry when performing any maintenance.
- Do not wear long hair unrestrained, loose-fitting clothing, or neckties which may become caught or entangled in the machine.
- Observe, understand, and obey all danger, warning, caution, and other instructions on the machine and in the Operator's Safety Manual.
- Keep standing surfaces and handholds free of grease, water, oil, etc.
- Never work under an elevated platform until the platform has been safely restrained from any movement.
- Before making any adjustments or performing any other maintenance on the machine, shut off all power.
- Keep all detachable components and attachments stowed in their proper place.
- Use only approved, nonflammable cleaning solvents.

1.2 Servicing + Maintenance Guidelines

The following information is provided to assist you in the use and application of the service and maintenance procedures contained in this chapter.



WHEN AN ABNORMAL CONDITION IS NOTED AND PROCEDURES CONTAINED WITHIN THIS MANUAL DO NOT SPECIFICALLY RELATE TO THE NOTED IRREGULARITY, USE OF THE MACHINE SHOULD BE STOPPED AND A QUALIFIED MECHANIC WITH PROPER KNOWLEDGE SHOULD CORRECT THE IRREGULARITY BEFORE WORK IS RESUMED.

Safety + Workmanship

Your safety, and that of others, is the first consideration when engaging in the maintenance of equipment. Always be conscious of moving components and pinch points. Do not allow heavy objects to rest in an unstable position. When raising a portion of the machine, ensure that adequate support is provided.

Cleanliness

The single most important item in preserving the long service life of a machine is to keep foreign materials out of the vital components. Reasonable precautions have been taken to safeguard against this. However, these areas must be maintained on a scheduled basis in order to preserve proper function of the machine.

Component Disassembly + Reassembly

When disassembling or reassembling a component, complete the procedural steps in sequence. Do not partially disassemble or reassemble one part and then start another. Always recheck your work to assure that nothing has been overlooked. Do not make any adjustments, other than those recommended, without obtaining proper approval.

SECTION 2

GEARBOX GENERAL INFORMATION

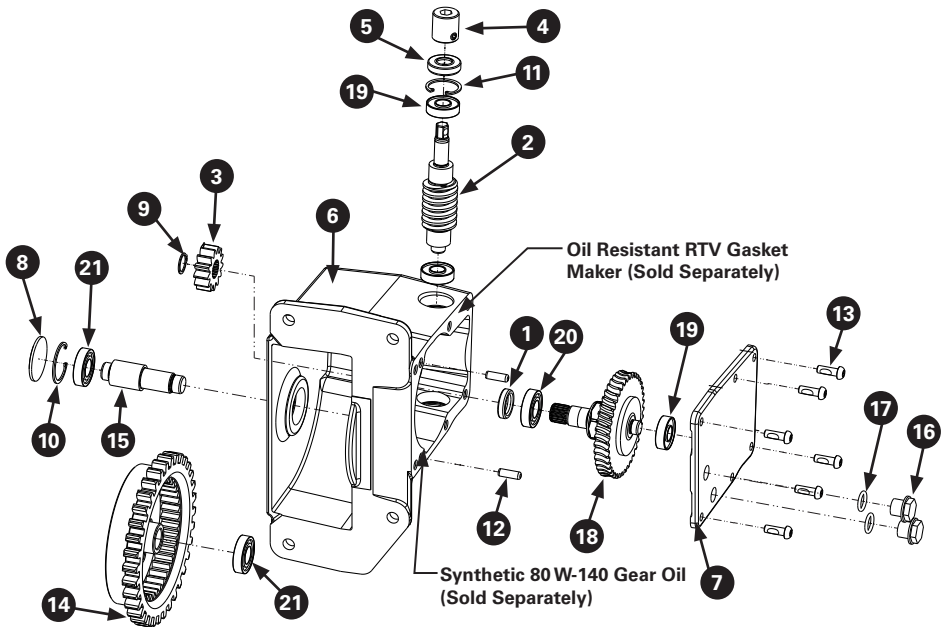
2.0 VERIFY CLUTCH FORCE

To verify the clutch force of the gearbox:

1. Erect a single mast assembly with the climbing unit next to a structure.
2. Taking all necessary safety precautions and with the climbing unit less than 1.6 ft (0.5 m) off the ground, load 1000 lbs (454 kg) and secure to the unit (no work platforms, etc.).
3. Raise the climbing unit to ensure the PowerMast can lift the load without stalling.
4. If the clutch fails the test, the entire clutch will need to be replaced. See Section 6.0

2.1 Heavy-Duty Gearbox Diagram - 4022484

Figure 2.0 - Heavy-Duty Gearbox (See Table 2.0)



2.2 Heavy-Duty Gearbox Part Numbers - 4022484

Table 2.0 - Heavy-Duty Gearbox Part Numbers (See Figure 2.0)

ITEM	DESCRIPTION	PART NUMBER	QTY
1	17 mm x 25 mm x 6 mm TC Dual Shaft Seal	4026036	1
2	Worm Shaft	4026055	1
3	13T Pinion Gear	4026058	1
4	Worm Shaft Coupler Assembly	4026564	1
5	12 mm x 28 mm x 7 mm Dual Lip Seal	4026661	1
6	Gearbox Machined Housing	4026662	1
7	Gearbox Machined Cover	4026663	1
8	1-1/2 in. Expansion Plug	4026664	1
9	5/8 in. External Retaining Ring	4026667	1
10	1-1/4 in. Internal Retaining Ring	4026668	1
11	28 mm Internal Retaining Ring	4026669	1
12	1/4 in. x 3/4 in. Dowel Pin	4026670	2
13	1/4-20 x 3/4 in. Torx Pan Head Screw	4026672	6
14	Gear Drive with Holes	4026803	1
15	Generation 2 Gearbox Output Shaft	4026852	1
16	M14x1.5 x 11 mm Magnetic Oil Plug	4027121	2
17	112 Buna-N O-Ring	4027322	2
18	1250-1300 lb (567-590 kg) Lift Clutch Assembly	4027662	1
19	6001-2RS 12 mm ID x 28 mm OD x 8 mm Ball Bearing	9200140	3
20	16003 17 mm ID x 35 mm OD x 8 mm Ball Bearing	9200150	1
21	16002-2RS 15 mm ID x 32 mm OD x 8 mm Ball Bearing	9200160	2

SECTION 3

REMOVING GEARBOX FROM CLIMBING UNIT

3.0 Tools Needed

- Flathead Screwdriver
- Hammer
- T-30 Torx Bit
- 17 mm Wrench or Socket
- 1/8 in. Allen Key
- Internal Snap Ring Pliers
- External Snap Ring Pliers (Bent Jaws)
- 5/16 in.-18 UNC Puller Tool or Bolt
- 9/16 in. Socket or Wrench
- 3/4 in. Sheet Metal Screw
- 3/4 in. Socket
- Torque Wrench

3.1 REMOVAL INSTRUCTIONS

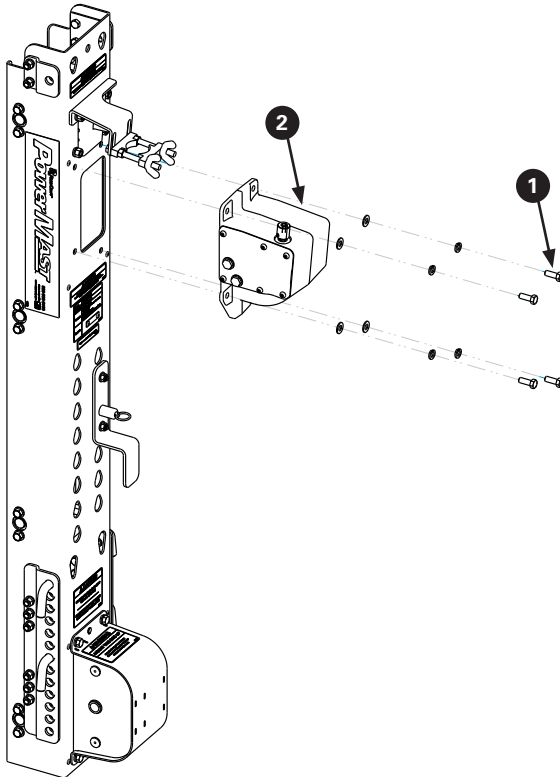
The gearbox can be removed while PowerMast is disassembled or erect. If removing while erect, the lock lever mechanism will keep the climbing unit at the same height and prevent the platform from moving downwards.

1. Use 9/16 in. socket or wrench to remove the 4 bolts from the gearbox.

Note: Make sure to support gearbox while removing bolts to prevent it from falling

2. Remove the gearbox from the climbing unit.
3. Inspect the overall gearbox and take note of any oil leaks, loose outer bearings, or wear.

Figure 3.0 - Removing Gearbox from Climbing Unit

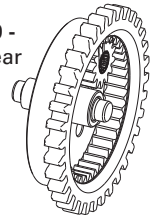


SECTION 4

DRIVE + PINION GEAR

The drive gear is secured with the output shaft and driven by the pinion gear to climb up the track. The pinion gear is mounted on the clutch assembly and transfers rotational energy to the drive gear.

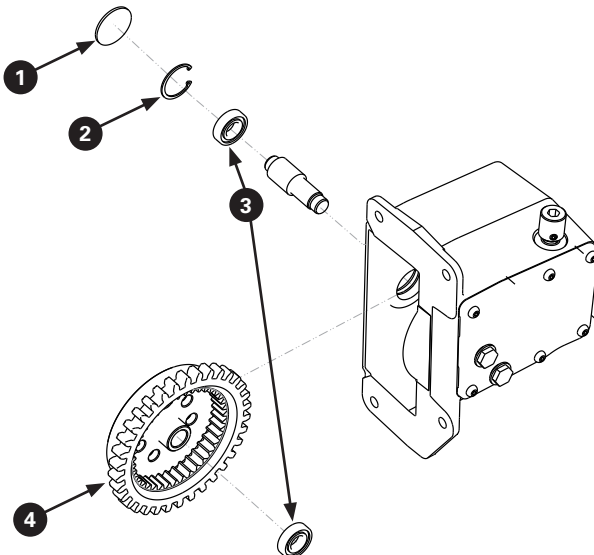
Figure 4.0 -
Pinion Gear



4.0 Instructions for Disassembly

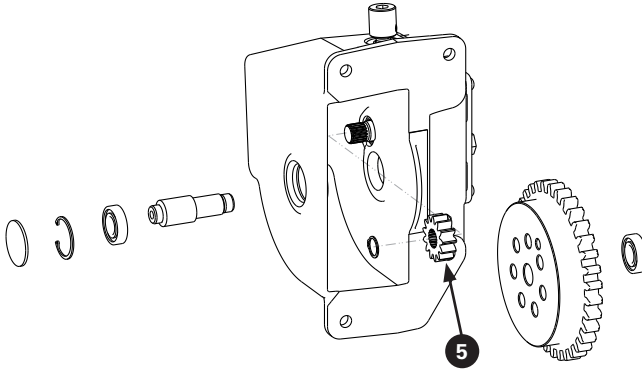
1. To remove the expansion plug, drive a construction screw directly into the center of the plug and use it to pull the plug off. The screw should be no larger than 3/4 in. long.
2. Using straight internal snap ring pliers, remove the retaining ring holding the bearing in place.
3. Remove the drive gear shaft.
 - If necessary, thread in a bolt with 5/16 in.-18 UNC threads and pull the shaft out with a bearing puller. Bolt must be at least 5/16 in. long.
 - Remove the bearings on the inner and outer end of the output shaft and inspect.
 - Spin the bearings and make sure the rotation is smooth and easy.
 - If the bearings are difficult to turn, produce vibration, or make an audible grinding noise, they must be replaced.

Figure 4.1 - Removing the Gear Shaft



4. Remove the drive gear and inspect for worn or missing teeth, chips and cracks, or any other signs of wear.
5. Use external snap ring pliers with bent jaws to remove the snap ring and slide the pinion gear off the pinion shaft.

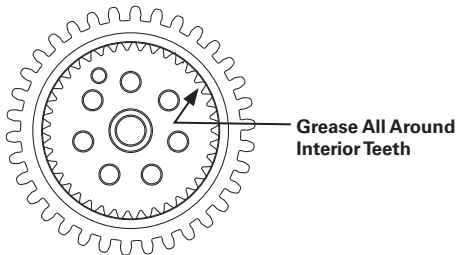
Figure 4.2 - Slide Pinion Gear Off Pinion Shaft



4.1 Instructions for Assembly

1. Install the pinion gear and the snap ring that holds it in place.
2. Add lithium grease to the interior teeth of the drive gear.

Figure 4.3 - Grease Interior Teeth



3. Install the inner bearing and insert the output shaft through the drive gear, securing it into the housing.
4. Install the outer bearing and use an internal snap ring pliers to install the snap ring.
5. Install the expansion plug. Pound the middle of the expansion plug with a small hammer until it is indented and will not come out.

SECTION 5

WORM SHAFT

The worm shaft is spun by an external source, such as a drill, and transfers the rotational energy to the clutch assembly.

Figure 5.0 -
Worm Shaft

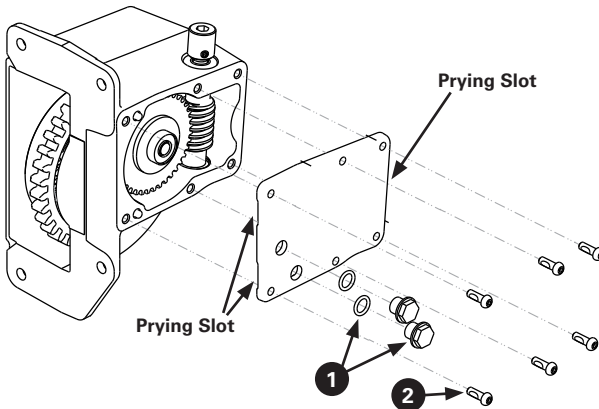


5.0 Instructions for Disassembly

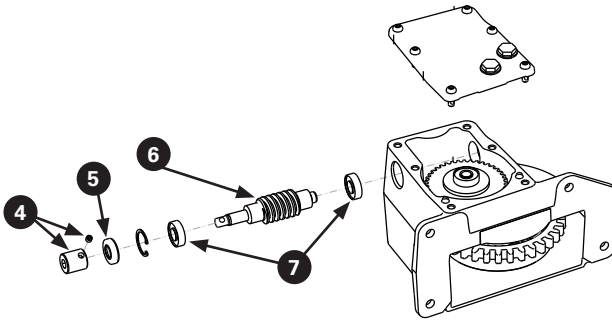
1. Remove the 2 magnetic oil plugs with a 17 mm wrench or socket. Inspect O-Rings for cracking and clear any metal particles stuck to the drain plugs.
2. Remove the 6 screws from the cover plate using a T-30 Torx bit.
3. Using a flathead screwdriver or prying tool, insert the tool into the prying slots and carefully remove the cover and drain oil.

Note: Be sure to only use the designated prying slots when removing the cover. Prying on the gasket surface could result in scoring and negatively affect the sealing integrity between components.

Figure 5.1 - Location of Oil Plugs, Screws, + Cover

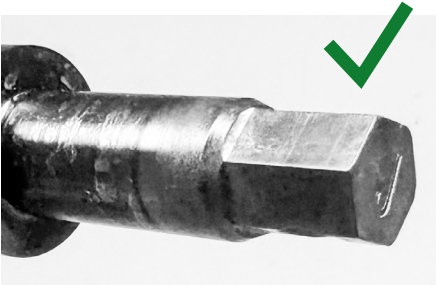


4. Loosen the set screw with an 1/8 in. Allen key and remove the worm shaft coupler.
5. The seal can be removed by driving a screw (no larger than 1/4 in. (6 mm) diameter) partway into the seal and pulling on the screw. The seal should be replaced if removed or damaged.
6. Remove the snap ring with a straight internal snap ring pliers and use a prying tool to push the worm shaft out of the gearbox housing.
7. Remove and inspect the worm shaft bearings. Spin the bearings and make sure the rotation is smooth and easy. If the bearings are difficult to turn, produce vibration, or make an audible grinding noise, they must be replaced.

Figure 5.2 - Worm Shaft Bearings, Snap Ring, + Coupler Disassembly

8. Inspect the worm shaft for wear, especially marring or rough surfaces. Inspect the hex end for any rounding that will cause the coupler to slip. Inspect for a noticeable burr or ledge on the teeth.

Note: *If the worm shaft must be replaced, the clutch assembly must be replaced at the same time as they must wear into each other.*

Figure 5.3 - Good + Bad Worm Shafts

The worm shaft displayed on the left side is in good condition with no visible rounding.

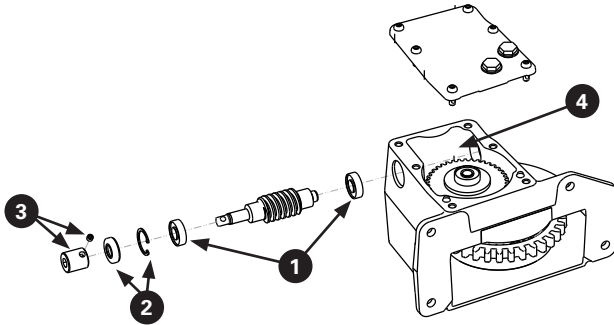


The worm shaft displayed on the right side has visible wear marks on the edges and appears to have a rounded end instead of a hex end. This could cause the coupler to slip on the worm shaft.

5.1 Instructions for Assembly

1. Replace the worm shaft bearings that were removed in step 7 on the previous page. A 3/4 in. socket can be used to drive the bearings in place.
2. Replace the snap ring. Use a 3/4 in. socket to drive the seal into place.
3. Reinstall the worm shaft coupler and tighten the set screw.

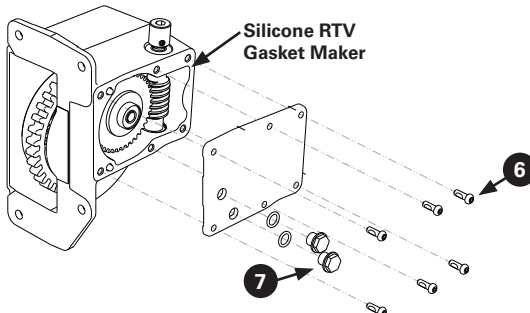
Figure 5.4 - Worm Shaft Bearings, Snap Ring, + Coupler Assembly



4. Add 5 oz (141.7 g) of 80w-140 gear oil to the gearbox housing.
5. Clean the mating surface and apply an 1/8 in. (3 mm) round bead of silicone gasket maker before the cover is reinstalled. Make sure to lay the silicone bead on the inside of the bolt holes to prevent leaking through the holes.
6. Replace the 6 screws from the cover plate using a T-30 Torx bit. Torque to 140 in-lbs (15.8 Nm).
7. Replace the 2 magnetic oil plugs with an 17 mm wrench or socket. Torque 130 in-lbs (14.7 Nm).

Note: *Be careful not to overtighten magnetic oil plugs, this could crush the O-Rings and cause leaking.*

Figure 5.5 - Reassembly of Cover + Oil Plugs

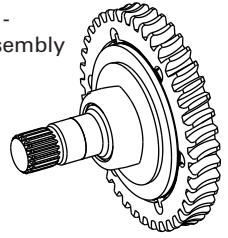


SECTION 6

CLUTCH ASSEMBLY

The clutch assembly is driven by the worm shaft and spins the pinion gear, which is mounted on the dry end of the clutch assembly. The clutch assembly has friction clutches that slip if overloaded, protecting the gearbox components from damage.

Figure 6.0 -
Clutch Assembly



6.0 Instructions for Disassembly

1. Remove the drive and pinion gear (Section 4.0).
2. Remove the worm shaft (Section 5.0).
3. Remove the bearing from the clutch assembly.
4. Remove the clutch assembly by hand and inspect for missing teeth or noticeable wear on each tooth.

Figure 6.1 - Removing Clutch Assembly

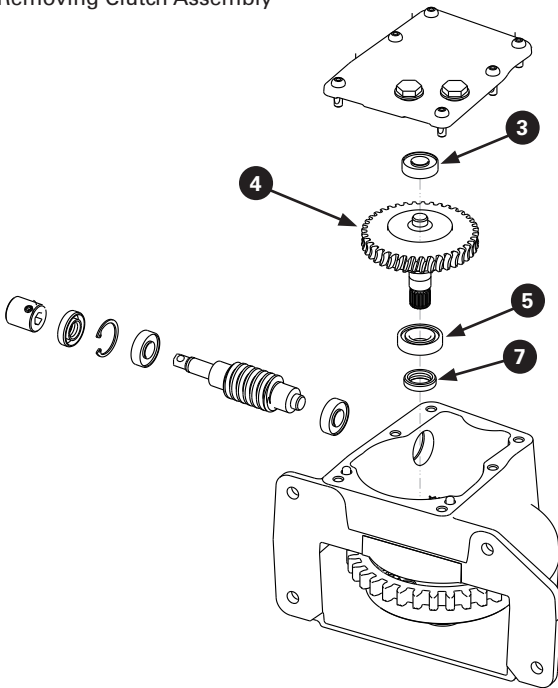
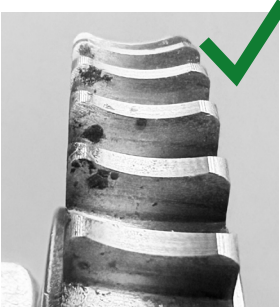
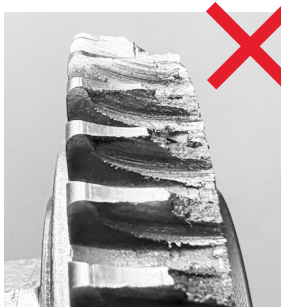


Figure 6.2 - Good + Bad Clutch Assemblies

This clutch assembly is in good condition with no burrs or missing teeth.



This clutch assembly must be replaced due to the broken teeth.



This clutch assembly must be replaced due to the worn teeth.

5. Using your fingers or a small screwdriver or prying tool, remove the inner bearing from the housing.
6. Inspect both bearings. Spin the bearings and make sure the rotation is smooth and easy. If the bearings are difficult to turn, produce vibration, or make an audible grinding noise, they must be replaced.
7. Using a small screwdriver or prying tool, remove the dual shaft seal from the housing and inspect.

6.1 Instructions for Assembly

1. To reassemble, perform the steps in Section 6.0 in reverse, 7 through 1.

Note: A 3/4 in. socket can be used to drive in seals and bearings.

SECTION 7 WARRANTY

ReechCraft, Inc. North American End-User Limited Warranties

Thank you for purchasing a ReechCraft product. Please read the following warranty for details about ReechCraft's limited manufacturer's warranty (the "end-user warranty").

By using the products (as defined below), you agree to the following provisions, which contain limitations on warranties and liabilities and on your remedies.

All new ReechCraft equipment with serial numbers and date-coded gearboxes (the "product") must be registered at **warranty.reechcraft.com** to activate the product's end-user warranty.

ReechCraft, Inc.'s ("ReechCraft") end-user warranty applies to new product only that is manufactured after September 1, 2018. The end-user warranty is solely for the benefit of the original end user who purchases the product from an authorized reseller of ReechCraft product (the "end user") and is a "manufacturer's" warranty provided directly by ReechCraft to the end user, effective on the end user's original date of purchase. For purposes of this end-user warranty, an authorized reseller of ReechCraft product shall be referred to herein as "reseller." In the event a reseller leases product to a customer of the reseller with or without consideration, the end-user warranty shall apply to the reseller only and NOT to a lessee of the product.

ReechCraft warrants all products for a period of 12 months and all other components and accessories for a period of 90 days from the end user's original date of purchase (the "warranty period"). The end-user warranty is non-transferable by the end user and only applies to product manufactured after September 1, 2018.

During the warranty period, ReechCraft warrants products to be free from defects in materials and workmanship. ReechCraft's obligation and liability on any products that ReechCraft has determined to have been defective in materials or workmanship shall be limited to the repair or replacement of the product, at the sole option of ReechCraft. Such replacement parts shall be provided at no cost to the end user. Replacement parts and components provided under this end-user warranty will continue to be covered until the end of the warranty period. Replacement parts and components purchased by the end user from ReechCraft or a reseller beyond the expiration of the warranty period will carry its own 90-day end-user warranty.

All products purchased by the end user must be registered at **warranty.reechcraft.com** within 60 days of the end user's purchase for the end-user warranty to be activated. In the event an end user fails to register the product within the 60-day period, this end-user warranty will not apply. ReechCraft reserves the right to request maintenance records of defective parts prior to settling any warranty claim, as well as to deny such claim if maintenance records are not available or not compliant with the product's maintenance schedules. All warranty claims must be submitted in writing as outlined in the claims procedure section, which can be obtained at **reechcraft.com/warrantyclaim** or by calling **1-888-600-6160**.

What The End-User Warranty Does Not Cover:

This end-user warranty does not cover any product (a) for which you are not the original purchaser; (b) that is repaired after the warranty period has expired; (c) manufactured before September 1, 2018; (d) normal wear and tear; (e) that has been installed other than per the product's instruction guidelines; (f) that has been improperly maintained or maintained, altered, modified, or repaired by someone other than ReechCraft or a ReechCraft authorized service center; (g) on which the serial number has been altered, removed, or rendered illegible; (h) that has been physically damaged, other than by ReechCraft or a ReechCraft reseller; (i) accidents, failure to follow instructions, use outside the scope of any other provided documentation (e.g., warning or instruction labels, owner's manual, installation instructions, etc.), misuse, abuse, neglect, fire, flood, or acts of God; or (j) any warranties provided by the reseller of the product.

Misuse may include, but is not limited to, damage to product by vehicles, tools, people, animals; the use of products beyond rated capacity; and using a product in any matter contrary to the warning or instruction labels on the product and the product's owner's manual. Manuals can be obtained by contacting ReechCraft at **1-888-600-6160** or at **reechcraft.com**.

This end-user warranty does not cover any labor (including repair labor), travel time or mileage for pickup and delivery, shipping or freight costs, or lost income for down time. Additionally, this end-user warranty does not cover any duties, taxes, or environmental fees, including but not limited to, the disposal or handling of materials.

Parts purchased or sourced by suppliers other than ReechCraft or a ReechCraft reseller are not covered under this end-user warranty. Under no circumstances will ReechCraft be responsible for any expense in connection with any repairs using unauthorized parts or in connection with any repairs made by anyone other than a reseller of the product or other ReechCraft authorized service station, unless such repairs have been specified in writing from ReechCraft.

THIS END-USER LIMITED WARRANTY IS IN LIEU OF ALL OTHER EXPRESS OR IMPLIED WARRANTIES. THIS END-USER WARRANTY IS THE SOLE AND EXCLUSIVE REMEDY OF THE END USER, WHICH IS THE REPAIR OR REPLACEMENT OF PARTS TO THE AFFECTED PRODUCT. TO THE EXTENT PERMITTED BY APPLICABLE LAW, REECHCRAFT EXPRESSLY DISCLAIMS ALL WARRANTIES, REPRESENTATIONS, OR CONDITIONS OF ANY KIND, EXCEPT AS EXPRESSLY STATED HEREIN. REECHCRAFT DISCLAIMS ALL WARRANTIES OR GUARANTEES, ORAL OR WRITTEN, EXPRESS OR IMPLIED (FROM ANY COURSE OF DEALING OR USAGE OF TRADE), INCLUDING BUT NOT LIMITED TO ANY WARRANTY OF NON-INFRINGEMENT, WARRANTY OF MERCHANTABILITY, OR FITNESS FOR A PARTICULAR PURPOSE.

THIS END-USER LIMITED WARRANTY MAY NOT BE MODIFIED, EXTENDED, OR ENLARGED BY ANY REPRESENTATIVE OF REECHCRAFT OR INTERMEDIATE SALES ASSOCIATE, RESELLER OF REECHCRAFT PRODUCT, OR AGENT.

IN NO EVENT SHALL REECHCRAFT, ITS DIRECTORS, OFFICERS, EMPLOYEES, OR AGENTS BE LIABLE FOR ANY SPECIAL, INCIDENTAL, CONSEQUENTIAL, PUNITIVE, OR

EXEMPLARY DAMAGES, INCLUDING BUT NOT LIMITED TO LOST PROFITS OR REVENUE, THE COST OF RENTAL OR REPLACEMENT EQUIPMENT, DOWNTIME, DAMAGE TO PROPERTY AND THIRD-PARTY CLAIMS, OR ANY OTHER COMMERCIAL OR ECONOMIC LOSSES OF ANY KIND, WHETHER BASED ON CONTRACT, TORT (INCLUDING THEORIES OF NEGLIGENCE, RECKLESSNESS, STRICT LIABILITY, OR DEFECTIVE PRODUCT LIABILITY), OR ANY LEGAL THEORY, EVEN IF ADVISED OF THE POSSIBILITY OF SUCH DAMAGES OR THEY ARE FORESEEABLE, ARISING OUT OF THE END USER'S USE OR INABILITY TO USE THE PRODUCT.

ANY REPAIR OF THE PRODUCT UNDERTAKEN WITHOUT PRIOR WRITTEN AUTHORIZATION FROM REECHCRAFT WILL VOID THIS WARRANTY.

These warranties give the end user specific legal rights. As the end user, you may also have other rights which may vary from state to state. Some states do not allow the exclusion or limitation of incidental or consequential damages, so the above limitations or exclusions may not apply to every end user.

All claims or disputes arising under or in connection with this end-user warranty shall be governed under the laws of the State of North Dakota and the laws of the United States (without giving effect to principles of conflicts of laws). The location of any dispute shall be Fargo, North Dakota. Any provision of this end-user warranty which is, or is deemed to be, unenforceable in any jurisdiction shall be severable from this end-user warranty in that jurisdiction, without in any way invalidating the remaining provisions of this end-user warranty, and any such unenforceability in that jurisdiction shall not make that provision unenforceable in any other jurisdiction.



ReechCraft®, Inc.

845 34th St N

Fargo, ND 58102

888.600.6160

reechcraft.com